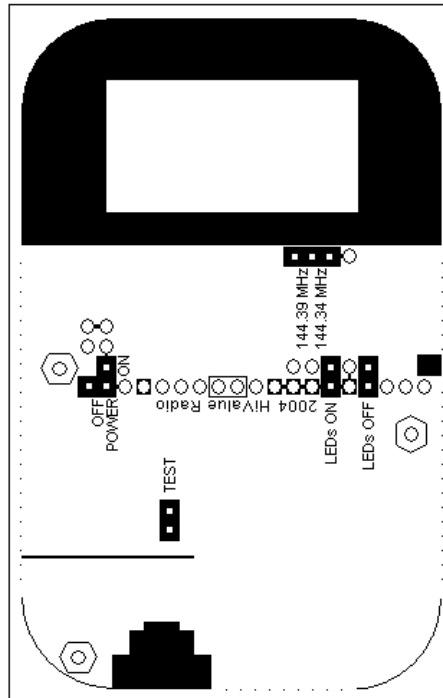
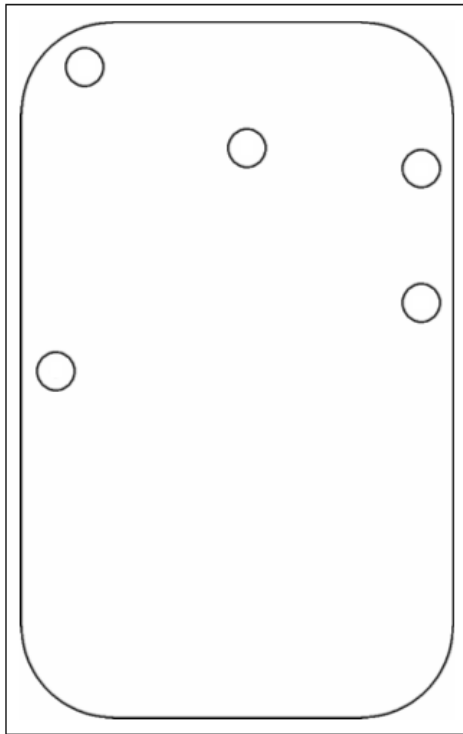
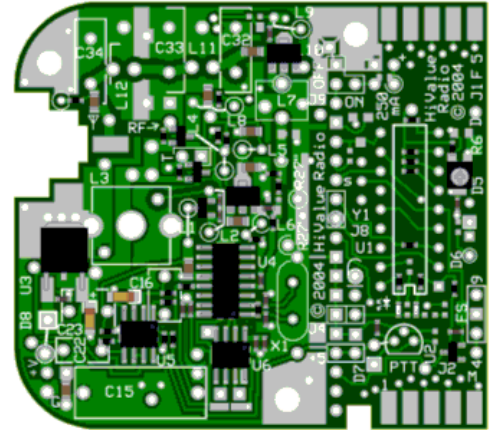


Pocket Tracker Kit Contents



Liner

Lid Label



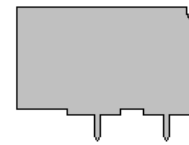
PC Board with 65 SMT parts pre-soldered & Transmitter PIC pre-programmed



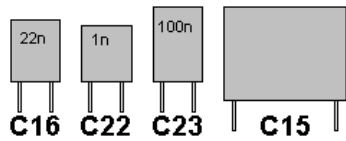
Side Battery Pad



Top Battery Pad



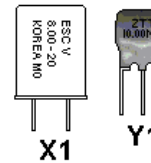
Shield



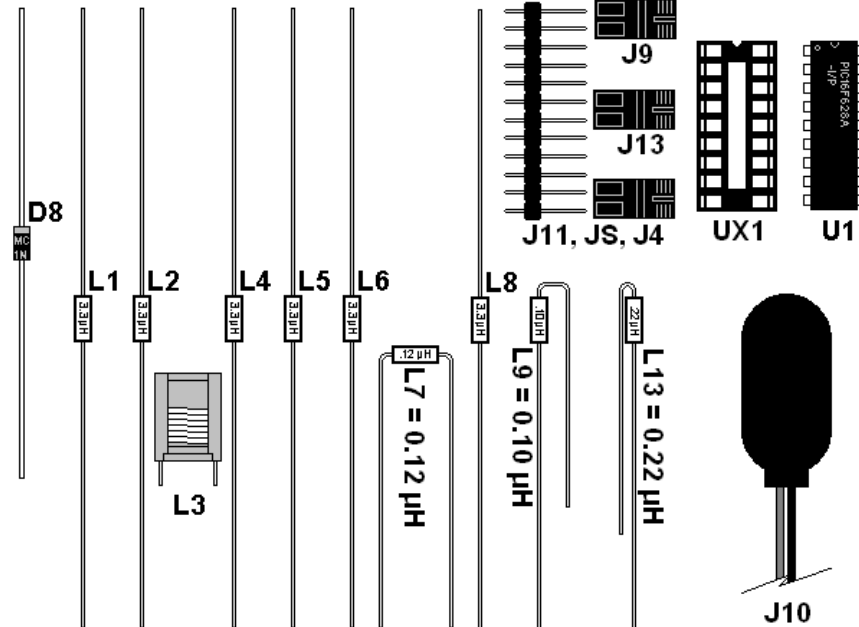
C16 C22 C23 C15



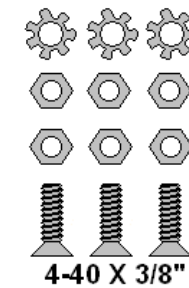
C32, 30 pF C34, 30 pF C33, 47 pF



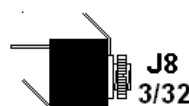
X1 Y1



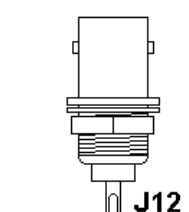
L1, L2, L4, L5, L6, L8 = 3.3 μ H



4-40 X 3/8"



J8 3/32"



J12

26 gauge insulated wire, yellow, 6"

20 gauge magnet wire, red, 6"

26 gauge insulated wire, white, red, blue, black, 4" each